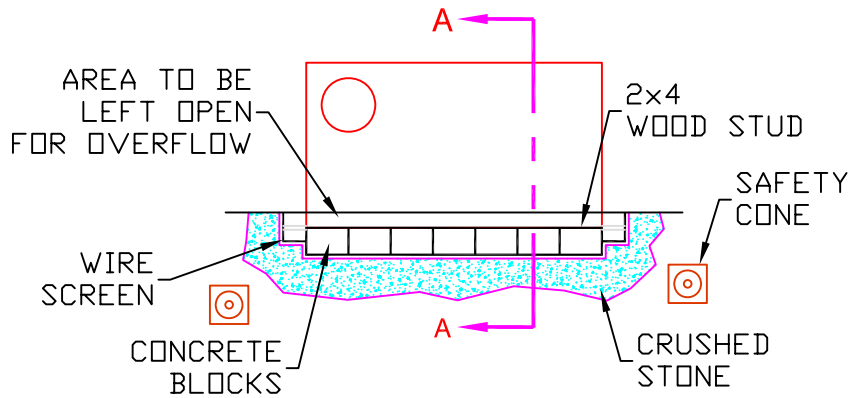
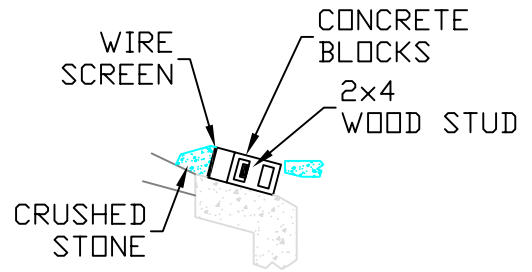


IP

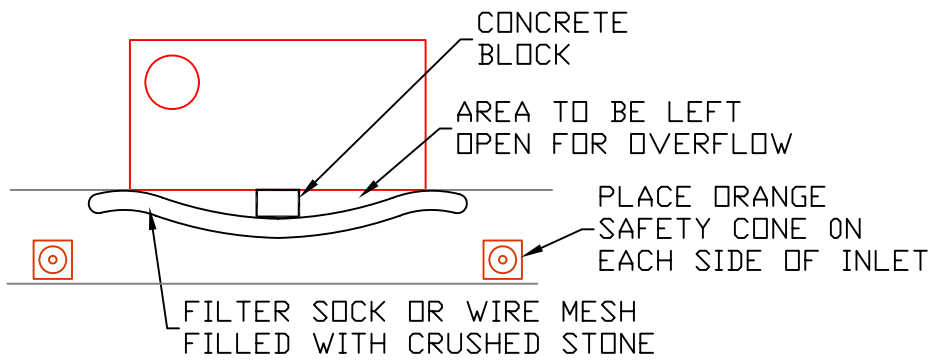


TYPE I - PLAN VIEW

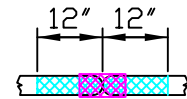
* ONLY TO BE USED IF STREET IS CLOSED TO THE PUBLIC



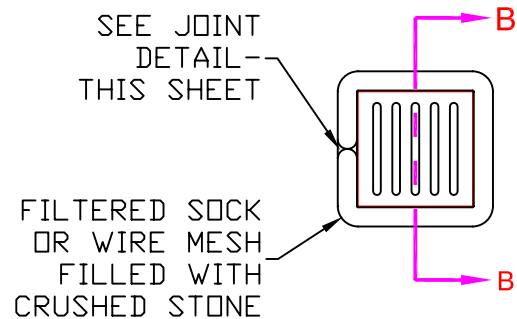
TYPE I - SECTION A-A



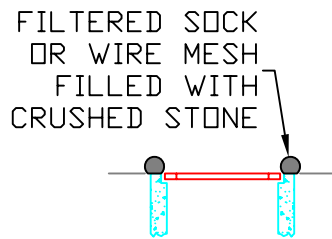
TYPE II - PLAN VIEW



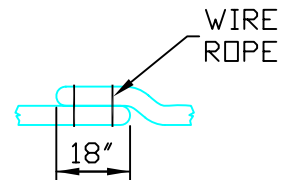
FOR WIRE MESH LOG, FILL GAPS IN JOINT WITH ADDITIONAL CRUSHED STONE AND WRAP WITH WIRE MESH



TYPE III - PLAN VIEW



TYPE III - SECTION B-B



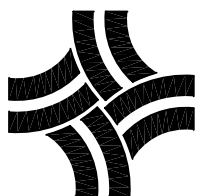
FOR FILTER SOCK, OVERLAP JOINT BY 18" AND SECURE WITH 2 WIRE ROPES

JOINT DETAIL

NOTES:

1. CRUSHED STONE SHALL BE NO. 4 STONE WITH 0% PASSING THE 3/4" SIEVE.
2. SEDIMENT SHALL BE REMOVED WHEN SEDIMENT ACCUMULATION REACHES 1/2 THE INLET PROTECTION HEIGHT.
3. INLET PROTECTION SHALL BE PLACED IN A MANNER NOT TO CAUSE SIGNIFICANT FLOODING IN PUBLIC STREETS OR AREAS.
4. INSET FILTER BAGS WITH OVERFLOW PORTS MAY BE USED IN HIGH TRAFFIC AREAS AS A SUBSTITUTE.
5. IF LARGE DEPOSITS OF SEDIMENT ENTERS THE STORM SEWER, THE CONTRACTOR SHALL CLEAN THE STORM SEWER TO THE SATISFACTION OF THE CITY.

N.T.S.



CITY OF THORNTON, COLORADO
STANDARDS & SPECIFICATIONS

INLET PROTECTION

ISSUED: NOV 08

REVISED:

DRAWING NO.

400-66